

Masport®

OUTDOOR BBQ

553265	Pacific Black	July 2022
553202	Maestro Black	July 2021
553266	Pacific Grey	July 2022
553204	Maestro Grey	July 2021
553267	Pacific Blue	July 2022
553206	Maestro Blue	July 2021
553268	Pacific Mint	July 2022
553208	Maestro Mint	July 2021



553206

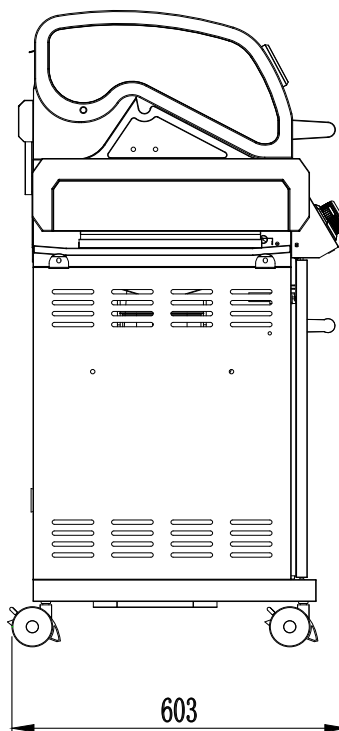
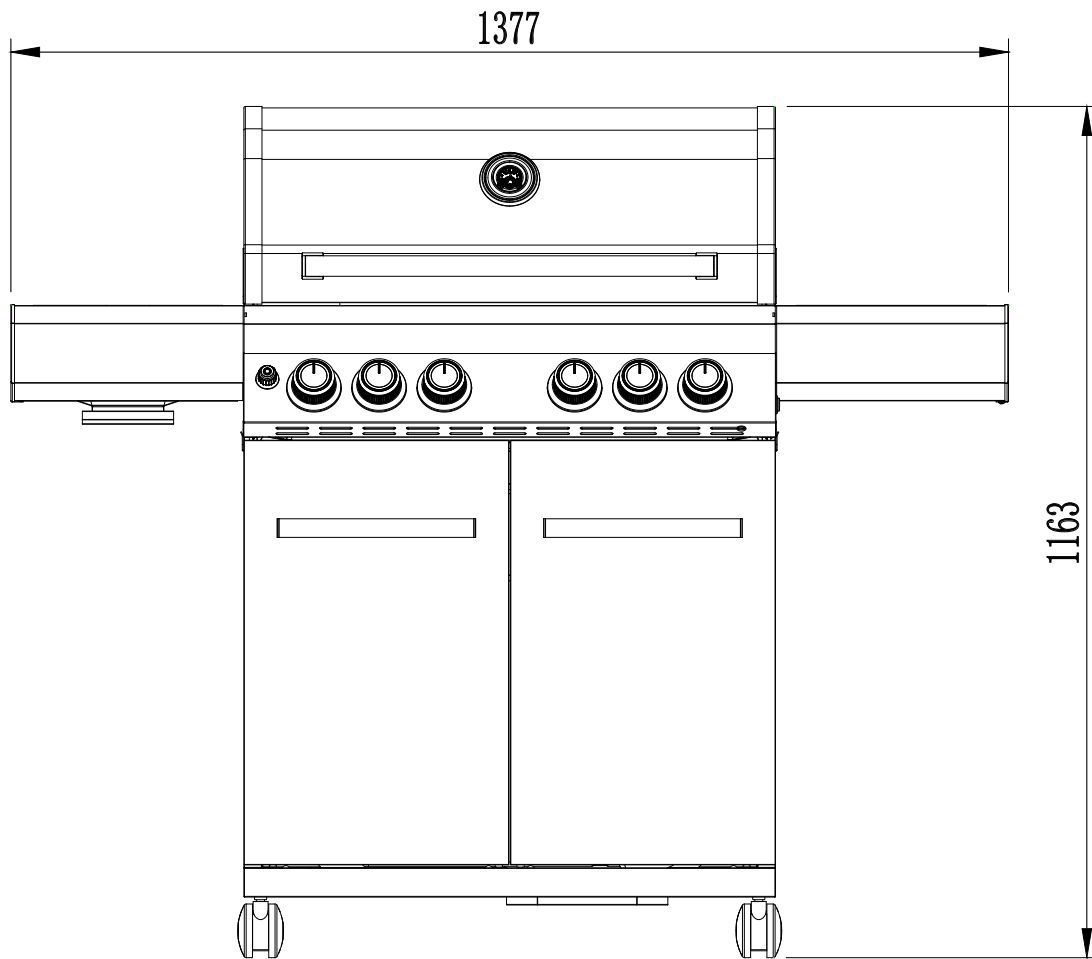
Issue A.2
Oct 2023 TV
ECN # 12974
IPL Ref # 753265



553265 BBQ-
Pacific Black

Masport®

Issue A.2
Oct 2023 TV
ECN # 12974
IPL Ref # 753265

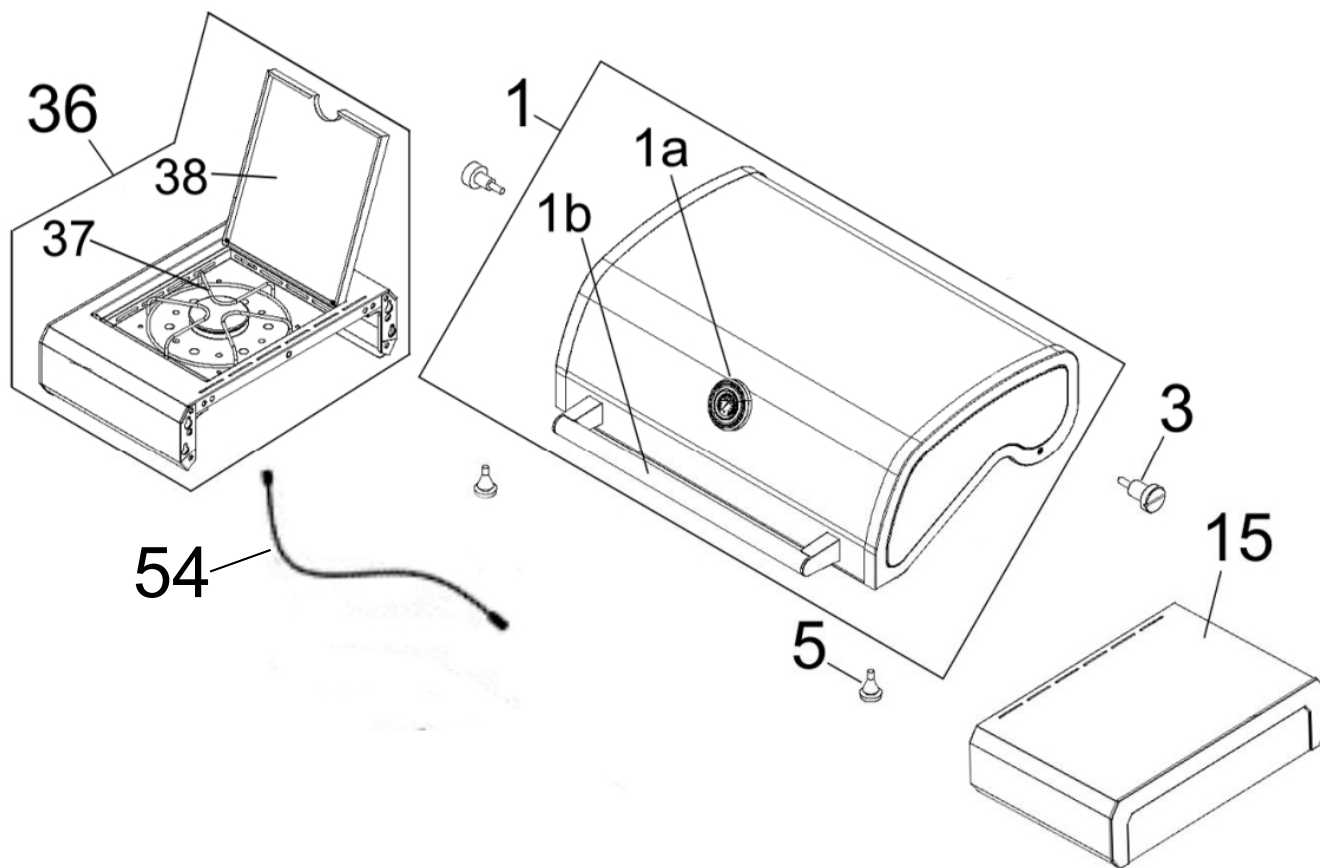




553265 BBQ-
Pacific Black

Masport®

Issue A.2
Oct 2023 TV
ECN # 12974
IPL Ref # 753265



Item	Part No	Description	Qty	Not Illustrated
1	543101-Black	Hood Assy- Black	(553265) 1	543165 Bolt- Pack 1
	" "	" " "	(553202)	546992 Owner's Manual 1
1	543101-Blue	Hood Assy- Blue	(553267) 1	543100 Cover- BBQ, Pacific only 1
	" "	" " "	(553206)	(BBQ's, 553265, 553266, 553267, 553268)
1	543101-Grey	Hood Assy- Grey	(553266) 1	
	" "	" " "	(553204)	
1	543101-Mint	Hood Assy- Mint	(553268) 1	
	" "	" " "	(553208)	
1a	543102	*Temperature Gauge	1	
1b	543104	*Handle- Hood	1	
3	543103	Screw- Shoulder, Hood	2	
5	543105	Rubber Stopper	2	
15	543115-Black	Table- Side, RH BEC	1	
15	543115-Grey	Table- Side, RH GEC	1	
36	543136-Black	Table- Side, LH BEC	(553265) 1	
	" "	" " " "	(553202) 1	
	" "	" " " "	(553267) 1	
	" "	" " " "	(553206) 1	
36	543136-Grey	Table- Side, LH GEC	(553266) 1	
	" "	" " " "	(553204)	
	" "	" " " "	(553268)	
	" "	" " " "	(553208)	
37	543137	*Trivet- Side Burner	1	
38	543138	*Lid- Side Burner	1	
54	548176	Wire- Ignition, SB (600mm)	1	
Abbreviations: BEC & GEC= Black End Cap & Grey End Cap				

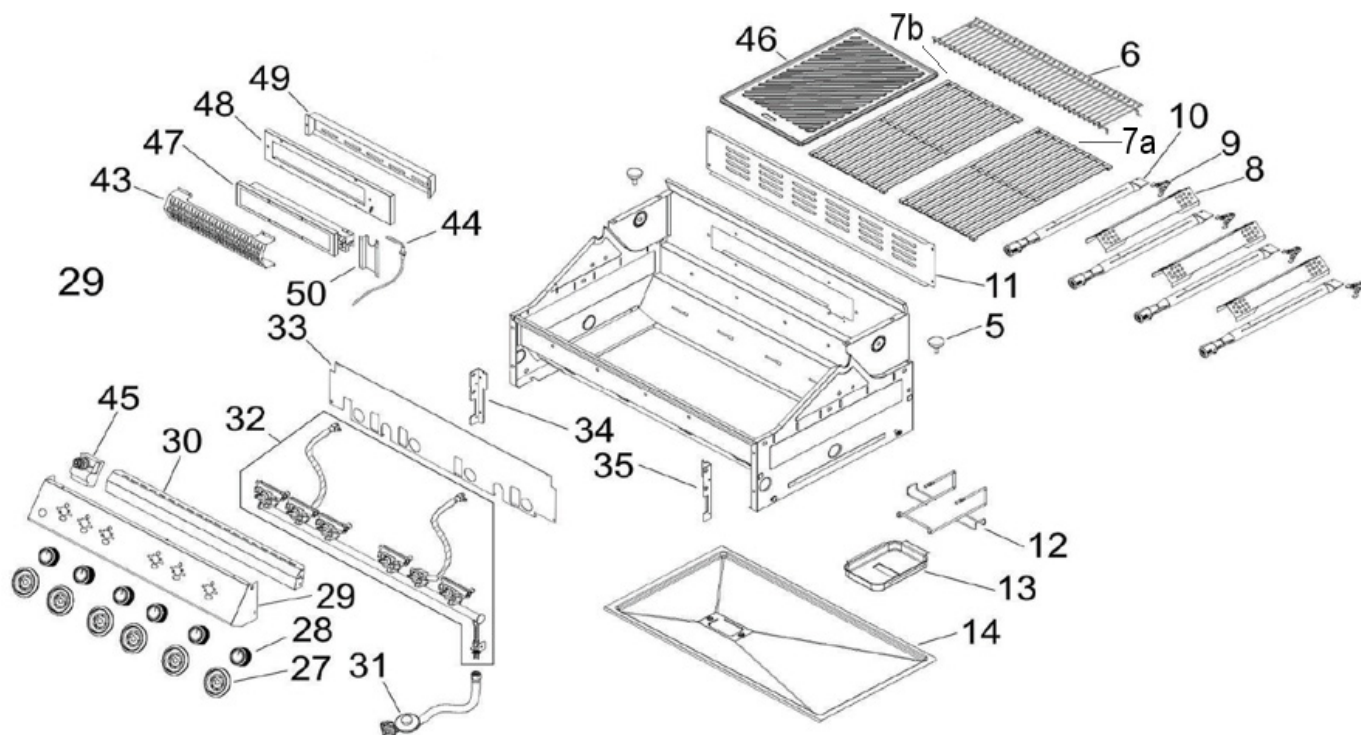
543100 Cover- BBQ, 1
for BBQ's, 553202, 553204, 553206, 553208



553265 BBQ-
Pacific Black

Masport®

Issue A.2
Oct 2023 TV
ECN # 12974
IPL Ref # 753265



Item	Part No	Description	Qty	Item	Part No	Description	Qty
5	543105	Rubber Stopper	2	43	543143	Cover- Rear Burner	1
6	543106	Rack- Warming	1	44	543144	Wire- Ignition, Rear Burner	1
8	543108-Enamel	Flame Tamer, Enamel	3	45	543145	Ignition- Rear Burner	1
9	543109	Clip- Burner	4	47	543147	Burner- Rear	1
10	543110	Burner- Tube	4	48	543148	Panel- Rear Burner	1
11	543111	Cover- Rear Burner	1	49	543149	Cover- Rear Burner	1
12	543112	Bracket- Grease Cup	1	50	543150	Cover- Rear Burner Hose	1
13	543113	Cup- Grease	1	Serial Number beginning with '2021':			
14	543114	Tray- Drip	1	7a	543107	Grill- P/Enamel, Matt 240mm	1
27	543127	Bezel- Knob	6	7b	543107	Grill- P/Enamel, Matt 240mm	1
28	543128	Knob	6	46	543146	Plate- P/E Matt, Matt 240mm	1
29	546981	Dashboard BBQ Pacific (553265)	1	Otherwise:			
"	"	" " " (553266)		7a	543107	Grill- P/Enamel, Matt 240mm	1
"	"	" " " (553267)		7b	543457	Grill- P/Enamel. Matt 185mm	1
"	"	" " " (553268)		46	543455	Plate- P/E Matt 300mm	1
29	546982	Dashboard BBQ Maestro (553202)	1				
"	"	" " " (553204)					
"	"	" " " (553206)					
"	"	" " " (553208)					
30	543130	Dashboard- Upper	1				
31	543498	Hose & Reg- LCC27 (AU & NZ)	1				
32	543132	Manifold Assy	1				
	543801	*Valve, Main Burner- LPG 0.96	4				
	548105	*Valve, Side Burner- LPG 0.91	1				
	543780	*Valve, Rear Burner- LPG 0.91	1				
33	543133	Panel- Manifold	1				
34	543134	Bracket- Panel, LH	1				
35	543135	Bracket- Panel, RH	1				

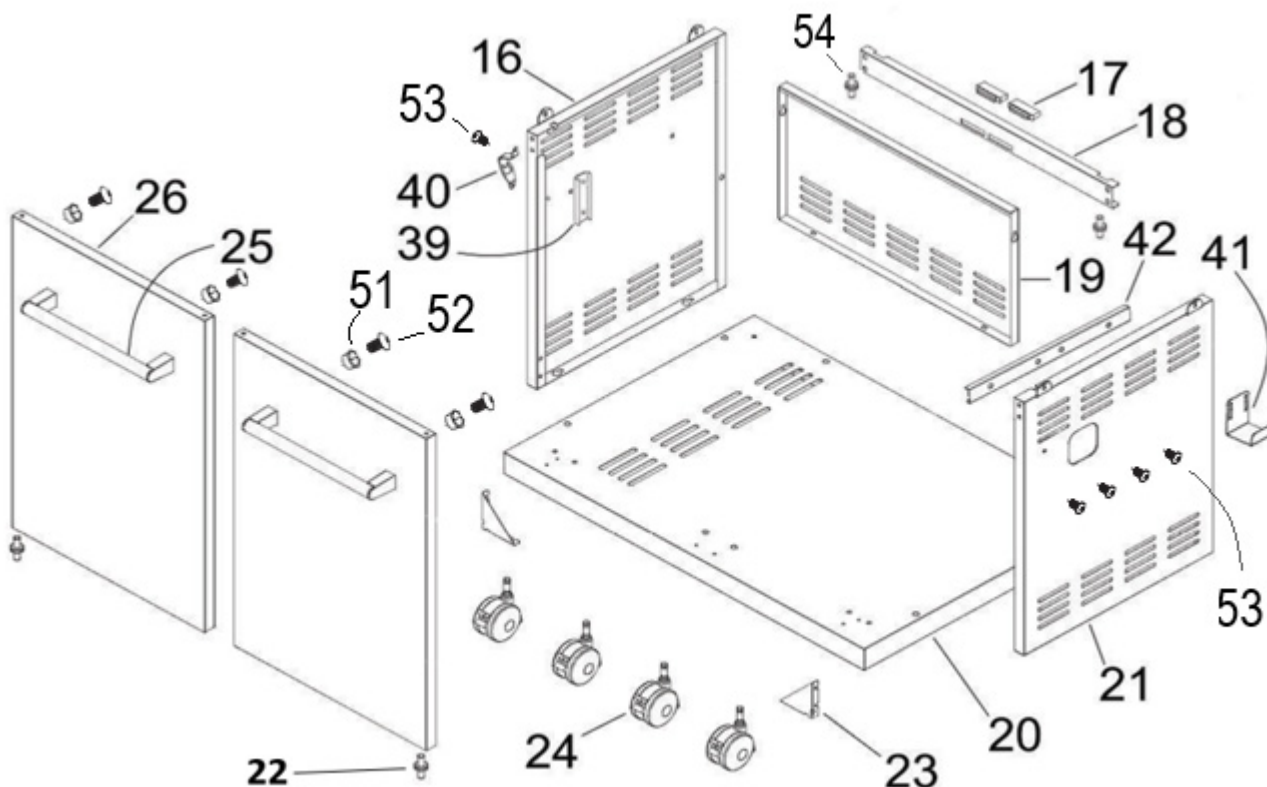
When ordering spares: PLEASE QUOTE PART NUMBER & DESCRIPTION, NOT illustrated number. Item Qty = 1 per part unless stated differently.
BOLD TEXT = Assemblies. Descriptions starting with * = items included in the assemblies & may not be available as a spares item.
Determine the left or right hand sides by standing in the operating position (standing at the handle).



553265 BBQ-
Pacific Black

Masport®

Issue A.2
Oct 2023 TV
ECN # 12974
IPL Ref # 753265



Used on: 553265, 553202

Item	Part No	Description	Qty
16	543116-Black	Panel- Side, LH Black	1
18	543118-Black	Panel- Support, Front Trolley	1
19	543119-Black	Panel- Rear, Trolley Black	1
20	543120-Black	Panel- Bottom, Trolley Black	1
21	543121-Black	Panel- Side, RH Black	1
26	543126-Black	Door Assy- Black	1

Used on: 553267, 553206

16	543116-Black	Panel- Side, LH Black	1
18	543118-Black	Panel- Support, Front Trolley	1
19	543119-Black	Panel- Rear, Trolley Black	1
20	543120-Black	Panel- Bottom, Trolley Black	1
21	543121-Black	Panel- Side, RH Black	1
26	543126-Blue	Door Assy- Blue	1

Used on: 553266, 553204

Item	Part No	Description	Qty
16	543116-Grey	Panel- Side, LH Grey	1
18	543118-Grey	Panel- Support, Front Trolley	1
19	543119-Grey	Panel- Rear, Trolley Grey	1
20	543120-Grey	Panel- Bottom, Trolley Grey	1
21	543121-Grey	Panel- Side, RH Grey	1
26	543126-Grey	Door Assy- Grey	1

Used on: 553268, 553208

16	543116-Grey	Panel- Side, LH Grey	1
18	543118-Grey	Panel- Support, Front Trolley	1
19	543119-Grey	Panel- Rear, Trolley Grey	1
20	543120-Grey	Panel- Bottom, Trolley Grey	1
21	543121-Grey	Panel- Side, RH Grey	1
26	543126-Mint	Door Assy- Mint	1

Commonly Used Items

17	543117	Magnet- Door	1	41	543141	Bracket- Gas Cylinder	1
22	543122	Hinge- Bottom, Door	2	42	543142	Holder- Gas Bracket	1
23	543123	Bracket- Bottom, Trolley	2	51	543221	Screw- Cap	4
24	543124	Castor- Locking	4	52	543220	Screw- Door Handle	4
25	543125	Handle- Door	2	53	547016	Screw- M6x12 SS	5
39	543139	Bracket- Bottle Opener	1	54	548668	Hinge- Door, upper	2
40	543140	Bottle Opener	1				

When ordering spares: PLEASE QUOTE PART NUMBER & DESCRIPTION, NOT illustrated number. Item Qty = 1 per part unless stated differently.

BOLD TEXT = Assemblies. Descriptions starting with * = items included in the assemblies & may not be available as a spares item.

Determine the left or right hand sides by standing in the operating position (standing at the handle).






553265 BBQ-
Pacific Black

Masport®

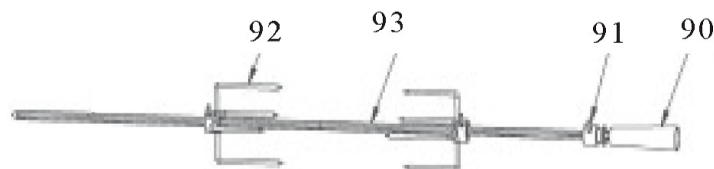
Issue A.2
Oct 2023 TV
ECN # 12974
IPL Ref # 753265

Data Plate 546986.a.0

Name	Model	IAPMO Approval	Injector (mm)	Pressure (kPa)	Inp/Burn (MJ/h)	Total (MJ/h)
Lifestyle Plus	K104BFE1	GMK10649	ULPG: M/B 0.96 S/B 0.91	2.75	4 x 11.5 1 x 10.8	56.80
Pacific	K104BHFE2	GMK10649	ULPG: M/B 0.96 S/B 0.91 R/B 0.91	2.75	4 x 11.5 1 x 10.8 1 x 10.8	67.6
Maestro	K104BHFE2	GMK10649	ULPG: M/B 0.96 S/B 0.91 R/B 0.91	2.75	4 x 11.5 1 x 10.8 1 x 10.8	67.6
<div>Gas Supply Pressure, ULPG Min: 2.70kPa; Max: 3.45kPa</div> <div>Gas Type: NZ: Universal LPG AUS: ULPG</div> <div>Complies to: Standard AS/NZS 52631.7</div>						
<div>Minimum Clearance :</div> <div>From Top of BBQ: 1500mm, From Sides: 700mm, From Rear : 700mm</div>						
<div>Distributed by MASPORT LIMITED</div>		<div><div><div></div><div>Read the instructions before using the appliance</div></div><div>USE OUTDOOR ONLY</div><div><div>WARNING: Parts of this appliance may be very hot, keep young children away</div></div></div> <div><div><div><div>IAPMO-R&T</div><div></div><div>OCEANA™ GasMark</div></div><div><div></div><div>AUSTRALIA AND NEW ZEALAND GAS SAFETY CERTIFICATION</div><div>Manufactured by: Ningbo Agsun Products, Inc. P.R.C</div></div></div></div>				
<div>MASPORT LIMITED 320 Ti Rakau Drive, East Tamaki, Auckland 2013, New Zealand PO Box 14349, Panmure Auckland 1471, New Zealand</div>						
<div>MASPORT AUSTRALIA PTY LIMITED 27 Commercial Drive Dandenong South Melbourne, Victoria 3175, Australia PO Box 533, Braeside, Victoria 3195, Australia</div>						
<div>For storage and cylinder exchange, disconnect hose at the cylinder only, do not disconnect hose from the appliance.</div>						

Spares Option Only - Rotisserie 548292 (Not included with this BBQ)

547001 Bracket Location



90	547008	Handle- Rotisserie Rod, M6	1
91	547005	Alignment Collar + Screw	1
92	547003	Prongs (each)	2
93	547004	Rod- Rotisserie 840mm	1
	547001	Bracket- (With Fasteners)	1
	547002	Collar-Alignment	1
	547006	Weight-Balance	1
	548554	Instruction Sheet	1
	559978	Motor- Rot' DC (Battery 2xD size)	1

When ordering spares: PLEASE QUOTE PART NUMBER & DESCRIPTION, NOT illustrated number. Item Qty = 1 per part unless stated differently.

BOLD TEXT = Assemblies. Descriptions starting with * = items included in the assemblies & may not be available as a spares item.

Determine the left or right hand sides by standing in the operating position (standing at the handle).